

# Gas ball valve series SF

Gas ball valves of series SF can be supplied with thread or flange connections are suitable to shut-off gas belonging to the first, second and third family and also liquid gas.

The are **CE** certified according to norm EN331 for the thread version and according to norm EN13774 for the flanged version.

They are available from Rp 1/4" to 2", full bore or reduced bore, with thread connection according to ISO 7/1 and flanged from DN15 to DN250 according to norm EN1092-2, PN16.

They are equipped with yellow colour for manual operation and on request they can be motorized with electric or pneumatic actuator.



## TECHNICAL FEATURES

<b>Body of thread valve</b>	Nichel plated brass
<b>Body of flanged valve</b>	Cast-iron GJS 400-15
<b>O-ring</b>	NBR
<b>Seat</b>	PTFE
<b>Max operating pressure</b>	5 bar thread valve / 16 bar flanged valve
<b>Operating temperature</b>	- 20 ÷ +60°C
<b>Thread connections</b>	Rp 1/4 ÷ Rp 2
<b>Flanged connections</b>	DN15 ÷ DN200
<b>Lever</b>	Steel surrounded by PVC

## FEATURES

- Full bore or reduce bore (on request)
- Thread connection F/F or M/F
- Version with lockable lever
- Lever or butterfly in yellow colour

**SF** = Thread ball valve  
**SFF/** = Flanged ball valve

**100/** = Full bore  
**151/** = Reduced bore  
**230/** = Top flange F03/04

**Diameter**

Thread		Flanged	
<b>06</b> =	Rp 1/4	<b>15</b> =	DN15
<b>09</b> =	Rp 3/8	<b>20</b> =	DN 20
<b>15</b> =	Rp 1/2	<b>25</b> =	DN 25
<b>20</b> =	Rp 3/4	<b>32</b> =	DN 32
<b>25</b> =	Rp 1	<b>40</b> =	DN 40
<b>32</b> =	Rp 1.1/4	<b>50</b> =	DN 50
<b>40</b> =	Rp 1.1/2	<b>65</b> =	DN 65
<b>50</b> =	Rp 2	<b>80</b> =	DN 80
		<b>100</b> =	DN 100
		<b>125</b> =	DN 125
		<b>150</b> =	DN 150
		<b>200</b> =	DN 200

**Model**

**/FF** = Female / female  
**/MF** = Male / female  
**/LU** = lockable  
**/AN** = ANSI flange

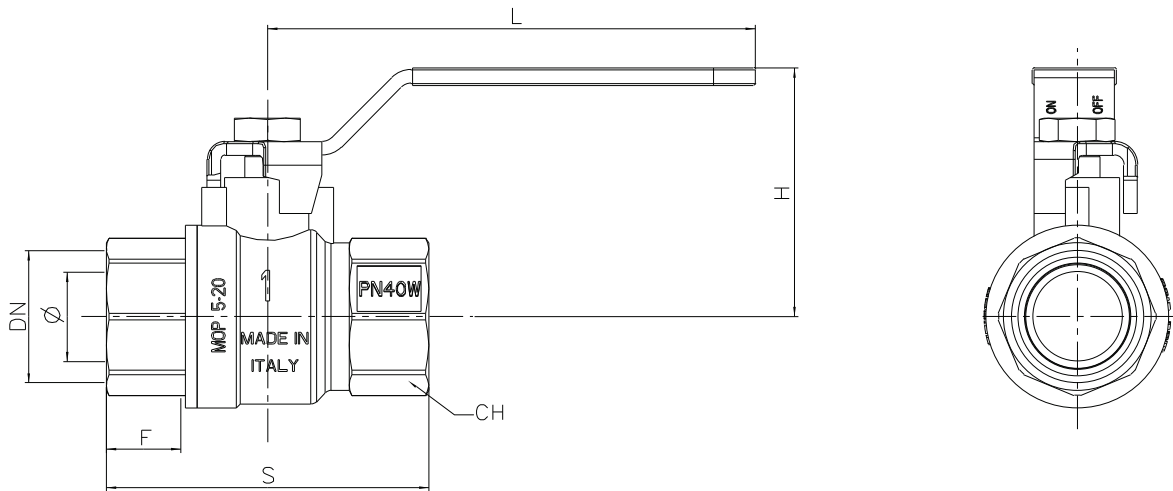
SF

100

40

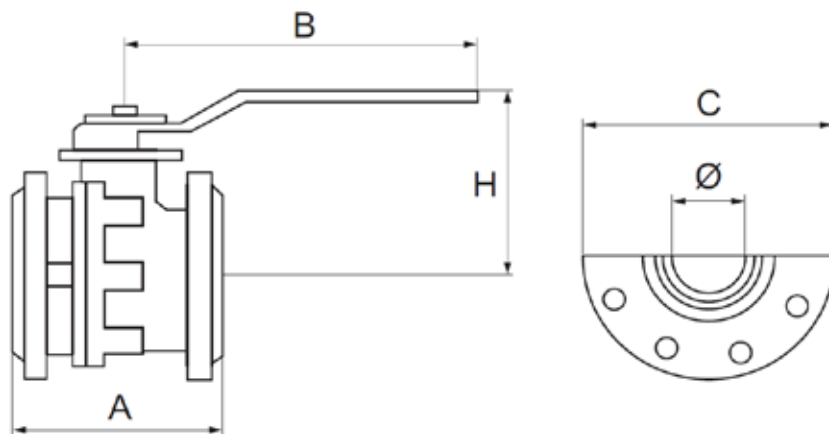
/FF

## DIMENSIONS



Dimensions (mm)

DN	1/4"	3/8"	1/2"	3/4"	1"	1 1/4"	1 1/2"	2"
Ø	10	10	15	20	25	32	40	50
F	10	10	15	16	19	21	21	26
S	45	45	60	70	83	98	108	130
H	41	41	41	50	54	66	72	86
L	80	80	90	111	111	140	140	170
Ch	21	21	26	31	38	48	55	68



Dimensions (mm)

DN	15	20	25	32	40	50	65	80	100	125	150	200
Ø	15	20	25	32	40	50	63	76	95	120	145	190
A	115	120	125	130	140	150	170	180	190	200	210	400
B	160	160	170	170	230	230	230	280	360	450	560	1000
C	95	105	115	140	150	165	185	200	220	250	285	340
H	84	84	96	101	125	135	143	165	180	225	243	320
Weight (Kg)	2,6	3,3	4,2	5,8	7,5	9	10,5	15,5	18,5	28	38,5	93

## BALL VALVE WITH ACTUATOR

Threaded and flanged ball valves can be supplied with pneumatic or electric actuator.

