

Gas pressure test point series PP

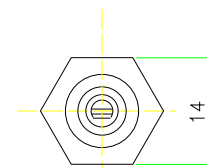
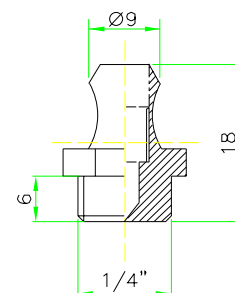
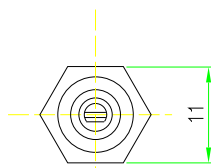
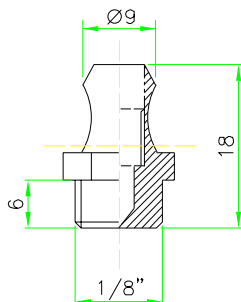
Gas pressure test points of series PP are made in brass and have a threaded screw (niddle) which allows to access to the pressure inside the pipe or valve.

PP is normally used to test pressure inside a pipe or a valve.



TECHNICAL FEATURES

Material	Brass
Niddle	Brass
Niddle fastening	Flat-blade screwdriver
Thread connection	1/8" and 1/4"
Max pressure	3 bar



All the reported data are subject to be changed without notice.

from 140909